

## NEW POINT S C.C.

IP67 IK08 CE III WP 

TIPOLOGIA | TYPOLOGY

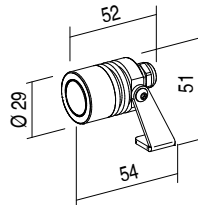
Proiettore | Projector

POSIZIONE INSTALLATIVA | INSTALLATION POSITION

A parete, a soffitto, a terra | Wall, ceiling and ground mounting

AMBIENTE INSTALLATIVO | INSTALLATION LOCATION

Esterno | Outdoor



POINT S

1W - 1,6W - 2,5W

 kg 0,13

## CARATTERISTICHE ELETTRICHE | ELECTRICAL FEATURES

POTENZA ASSORBITA   POWER CONSUMPTION	1W - 1,6W - 2,5W
ALIMENTAZIONE   POWER SUPPLY	C.C.
ALIMENTATORE   POWER SUPPLY UNIT	1W - 350mA Non incluso   Not included 1,6W - 500mA Non incluso   Not included 2,5W - 700mA Non incluso   Not included
COLLEGAMENTO   CONNECTION	Serie   Series

## CARATTERISTICHE ILLUMINOTECNICHE | LIGHTING FEATURES

COLORE LED   LED COLOUR	2200K, 2700K, 3000K, 4000K, Red, Green, Blue
INDICE RESA CROMATICA CRI   CRI	>80 (2200K, 2700K, 3000K, 4000K)
BINNING	3 McAdam step
OTTICHE   OPTICS	10°, 36°, 60°
FLUSSO REALE EMESSO - 3000K REAL OUTPUT FLUX	1W 89lm 36° - 1,6W 127lm 36° - 2,5W 178lm 36°
DURATA MEDIA LED   AVERAGE LED LIFE	50.000h L80 B10


## CARATTERISTICHE MECCANICHE | MECHANICAL FEATURES

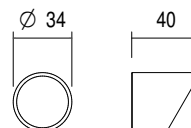
PESO   WEIGHT	kg 0,13
FINITURE   FINISHES	Bianco txt, Grigio txt, Nero txt, Corten, Antracite txt, Verde, Sand txt White, txt Grey, txt Black, Corten, txt Anthracite, Green, Sand
INSTALLAZIONE   INSTALLATION	A terra, parete o soffitto con staffa (inclusa), su terreno con picchetto (non incluso), su pali/alberi con cinghia di fissaggio (non inclusa) Floor, wall or ceiling mounting with bracket (included), in ground with peg (not included), on poles / trees by mounting strap (not included)
MATERIALE   MATERIAL	Corpo in alluminio anticorrosione in acciaio inox AISI 316L per versione Sub, staffa in acciaio inox satinato, vetro temperato trasparente Anticorrosional aluminium body or stainless steel AISI 316L body for Sub version, satinized stainless steel bracket, transparent tempered glass


## CARATTERISTICHE GENERALI | GENERAL FEATURES

TEMPERATURA DI ESERCIZIO OPERATING TEMPERATURE	-10°C +45°C
GRADO DI PROTEZIONE   INGRESS PROTECTION	IP67
GRADO DI RESISTENZA   IMPACT RESISTANCE	IK08
GLOW WIRE TEST   GLOW WIRE TEST	960°C
TEMPERATURA MASSIMA APPARECCHIO MAX. TEMPERATURE OF FIXTURE	40° @ Ta = 25°
CLASSE DI ISOLAMENTO   APPLIANCE CLASS	III
CALPESTABILE   WALKOVER	No
CARRABILE   DRIVE OVER	No
SICUREZZA STANDARD   STANDARD SAFETY	WP System
SICUREZZA FOTOBIOLOGICA PHOTOBIOLOGICAL SAFETY	GR1

## ACCESSORI | ACCESSORIES

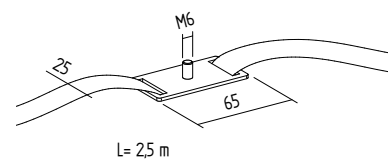
<b>CODICE / CODE</b>	<b>PL001</b>
<b>TIPOLOGIA / TYPOLOGY</b>	<b>Paralume</b> Shade  kg 0,02
<b>MATERIALE / MATERIAL</b>	<b>Alluminio</b> Aluminium




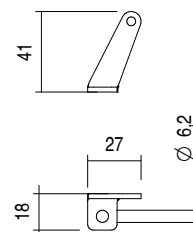
<b>CODICE / CODE</b>	<b>PI002</b>
<b>TIPOLOGIA / TYPOLOGY</b>	<b>Picchetto</b> Peg  kg 0,10
<b>MATERIALE / MATERIAL</b>	<b>Acciaio inox</b> Stainless steel



<b>CODICE / CODE</b>	<b>CIN20</b>
<b>TIPOLOGIA / TYPOLOGY</b>	<b>Cinghia di fissaggio</b> Mounting Strap  kg 0,11
<b>MATERIALE / MATERIAL</b>	<b>Nastro in poliestere, fibbia e basetta in acciaio inox</b> Polyester tape, stainless steel buckle and base



<b>CODICE / CODE</b>	<b>ST013</b>
<b>TIPOLOGIA / TYPOLOGY</b>	<b>Staffa</b> Bracket  kg 0,11
<b>MATERIALE / MATERIAL</b>	<b>Acciaio inox</b> Stainless steel



## FILTRI | FILTER

<b>CODICE / CODE</b>	<b>HC</b>
<b>TIPOLOGIA / TYPOLOGY</b>	<b>Filtro Honeycomb</b> Honeycomb filter

