

UPDATE ECATE 1 24Vdc

IP65 IK08 CE   

TIPOLOGIA / TYPOLOGY

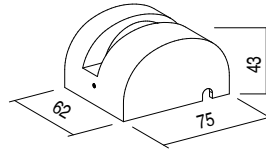
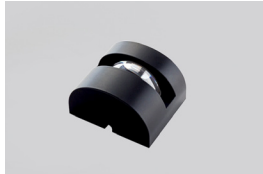
Proiettore | Projector

POSIZIONE INSTALLATIVA | INSTALLATION POSITION

A terra | Floor mounting

AMBIENTE INSTALLATIVO | INSTALLATION LOCATION

Esterno | Outdoor



ECATE 1

3,5W

 kg 0,47


ECATE 1 24Vdc
CARATTERISTICHE ELETTRICHE | ELECTRICAL FEATURES

POTENZA ASSORBITA POWER CONSUMPTION	3,5W
ALIMENTAZIONE POWER SUPPLY	24Vdc
ALIMENTATORE POWER SUPPLY UNIT	3,5W - 24Vdc (non incluso not included)
COLLEGAMENTO CONNECTION	Parallelo Parallel

CARATTERISTICHE ILLUMINOTECNICHE | LIGHTING FEATURES

COLORE LED LED COLOUR	2200K, 2700K, 3000K, 4000K, Red, Green, Blue
INDICE RESA CROMATICA CRI CRI	>80 (2200K, 2700K, 3000K, 4000K)
BINNING	3 step MacAdam 3 MacAdam steps
OTTICHE OPTICS	3° x 180°
FLUSSO REALE EMESSO - 3000K REAL OUTPUT FLUX	3,5W 111lm
DURATA MEDIA LED AVERAGE LED LIFE	50.000h L80 B10

CARATTERISTICHE MECCANICHE | MECHANICAL FEATURES


PESO WEIGHT	Kg 0,47
FINITURE FINISHES	Bianco txt, Grigio txt, Nero txt, Corten, Antracite txt, Sand Txt White, txt Grey, txt Black, Corten txt Anthracite, Sand
INSTALLAZIONE INSTALLATION	A superficie con basetta di fissaggio (inclusa) e viti (non incluse) Surface mounted with fixing base (included) and screws (not included)
MATERIALE MATERIAL	Corpo in alluminio anticorrosivo, lente in PMMA Anticorrosive aluminium body, PMMA lens

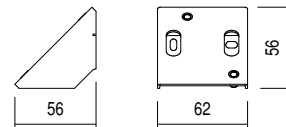
CARATTERISTICHE GENERALI | GENERAL FEATURES


TEMPERATURA DI ESERCIZIO OPERATING TEMPERATURE	-10°C +45°C
GRADO DI PROTEZIONE INGRESS PROTECTION	IP65
GRADO DI RESISTENZA IMPACT RESISTANCE	IK08
GLOW WIRE TEST GLOW WIRE TEST	960°C.
TEMPERATURA MASSIMA APPARECCHIO MAX. TEMPERATURE OF FIXTURE	40° @ Ta = 25°
CLASSE DI ISOLAMENTO APPLIANCE CLASS	III
CALPESTABILE WALKOVER	No
CARRABILE DRIVE OVER	No
SICUREZZA STANDARD STANDARD SAFETY	I
SICUREZZA FOTOBIOLOGICA PHOTOBIOLOGICAL SAFETY	GR1

UPDATE ECATE 1 24Vdc

ACCESSORI | ACCESSORIES

CODICE / CODE	BAE01
TIPOLOGIA / TYPOLOGY	Basetta Base  kg 0,04
MATERIALE / MATERIAL	Stainless steel Acciaio inox



CODICE / CODE	BAE02
TIPOLOGIA / TYPOLOGY	Basetta Base  kg 0,04
MATERIALE / MATERIAL	Alluminio Aluminium

