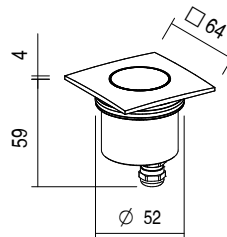
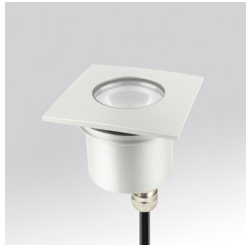


## ALTEA MAXI S C.C.

IP67 IK08 CE III WP TIPOLOGIA / *TPOLOGY*Incasso | *Recessed*POSIZIONE INSTALLATIVA | *INSTALLATION POSITION*A terra, a parete | *Floor or wall mounting*AMBIENTE INSTALLATIVO | *INSTALLATION LOCATION*Esterno | *Outdoor*

## ALTEA MAXI S

4W - 6W

 53 mm Finish .01  
kg 0,24 Finish .06 .10  
kg 0,38

## ALTEA MAXI S C.C.

## CARATTERISTICHE ELETTRICHE | ELECTRICAL FEATURES

POTENZA ASSORBITA   POWER CONSUMPTION	4W - 6W
ALIMENTAZIONE   POWER SUPPLY	C.C.
ALIMENTATORE   POWER SUPPLY UNIT	4W - 350mA non incluso   not included 6W - 500mA non incluso   not included
COLLEGAMENTO   CONNECTION	Serie   Series

## CARATTERISTICHE ILLUMINOTECNICHE | LIGHTING FEATURES

COLORE LED   LED COLOUR	2200K, 2700K, 3000K, 4000K, Red, Green, Blue
INDICE RESA CROMATICA CRI   CRI	>80 (2200K, 2700K, 3000K, 4000K)
BINNING	3 step MacAdam   3 MacAdam steps
OTTICHE   OPTICS	8°, 16°, 30°, 40°, 64°, Diffused, 16°x 40°, ASYM
FLUSSO REALE EMESSO - 3000K REAL OUTPUT FLUX	4W 326lm 30° - 6W 465lm 30°
DURATA MEDIA LED   AVERAGE LED LIFE	50.000h L80 B10

## CARATTERISTICHE MECCANICHE | MECHANICAL FEATURES


PESO   WEIGHT	Finishig .01	Kg 0,24
	Finishig .06 .10	Kg 0,38
FINITURE   FINISHES	Alluminio anodizzato, Acciaio, Acciaio Spazzolato Anodized aluminium, Steel, Brushed Steel	
INSTALLAZIONE   INSTALLATION	A incasso a terra con cassaforma (non inclusa), a incasso su cartongesso o legno tramite molla (non inclusa), a incasso su muratura con cassaforma (non inclusa) Recessed on ground with housing box (not included), recessed on plasterboard or wood with springs (not included), recessed on brickwork with housing box (not included)	
MATERIALE   MATERIAL	Corpo in alluminio anticorodal anodizzato, ghiera in alluminio anodizzato o in acciaio inox AISI 316L, vetro temperato trasparente e lente in PMMA Anticorodal anodized aluminium body, anodized aluminium or AISI 316L stainless steel trim, transparent tempered glass and PMMA lens	

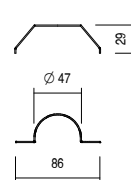
## CARATTERISTICHE GENERALI | GENERAL FEATURES


TEMPERATURA DI ESERCIZIO OPERATING TEMPERATURE	-10°C +45°C
GRADO DI PROTEZIONE   INGRESS PROTECTION	IP67
GRADO DI RESISTENZA   IMPACT RESISTANCE	IK08
GLOW WIRE TEST   GLOW WIRE TEST	960°C
TEMPERATURA MASSIMA APPARECCHIO MAX. TEMPERATURE OF FIXTURE	50° @ Ta = 25°
CLASSE DI ISOLAMENTO   APPLIANCE CLASS	III
CALPESTABILE   WALKOVER	Sì / Yes
CARRABILE   DRIVE OVER	2000 Kg
SICUREZZA STANDARD   STANDARD SAFETY	WP System
SICUREZZA FOTOBIOLOGICA PHOTOBIOLOGICAL SAFETY	GR1

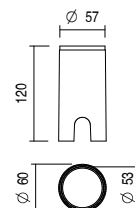
## ALTEA MAXI S C.C.


## ACCESSORI | ACCESSORIES

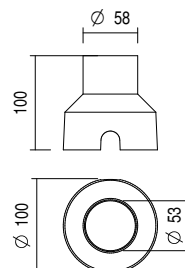
<b>CODICE / CODE</b>	<b>ML053</b>	
<b>TIPOLOGIA / TYPOLOGY</b>	<b>Molla di torsione</b> <i>Torsion spring</i>	 kg 0,001
<b>MATERIALE   MATERIAL</b>	<b>Acciaio inox</b> <i>Stainless steel</i>	



<b>CODICE / CODE</b>	<b>CAW53</b>	
<b>TIPOLOGIA / TYPOLOGY</b>	<b>Cassaforma</b> <i>Housing box</i>	 kg 0,09
<b>MATERIALE   MATERIAL</b>	<b>PVC</b>	



<b>CODICE / CODE</b>	<b>CAI53</b>	
<b>TIPOLOGIA / TYPOLOGY</b>	<b>Cassaforma</b> <i>Housing box</i>	 kg 0,06
<b>MATERIALE   MATERIAL</b>	<b>ABS</b>	

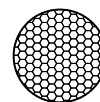


a scelta | to be chosen

a scelta | to be chosen

## FILTRI | FILTER

<b>CODICE / CODE</b>	<b>HC</b>	
<b>TIPOLOGIA / TYPOLOGY</b>	<b>Filtro Honeycomb</b> <i>Honeycomb filter</i>	
<b>NOTE</b>	<i>with 30°, 16°, 40°, 64°, 16°x 40° lens only</i>	



<b>CODICE / CODE</b>	<b>BC</b>	
<b>TIPOLOGIA / TYPOLOGY</b>	<b>Filtro Black &amp; Clear</b> <i>Black &amp; Clear filter</i>	
<b>NOTE</b>	<i>with 8°, 30°, 16°, 40°, 64° lens only</i>	



<b>CODICE / CODE</b>	<b>BD</b>	
<b>TIPOLOGIA / TYPOLOGY</b>	<b>Filtro Black &amp; Diffused</b> <i>Black &amp; Diffused filter</i>	
<b>NOTE</b>	<i>with diffused lens only</i>	

