

AUREOLE Collection | AC VXS.1/4

Designed by **ROLLO STUDIO**

Made and assembled in Europe

VXS SUNS

**UNBOXING & MOUNTING
INSTRUCTIONS**

ROLLO STUDIO

CONTACT

ROLLO STUDIO

+31 621485253

info@rollostudio.com



Supported Models

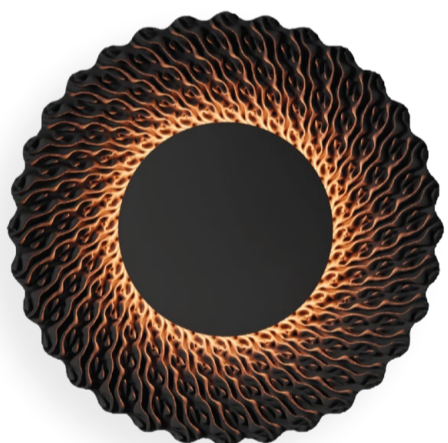
Aureole Collection | VXS



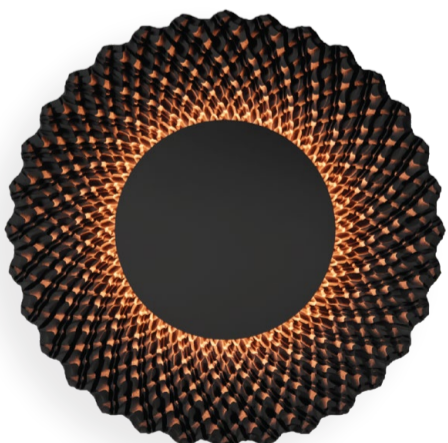
SUN VXS.01



SUN VXS.02



SUN VXS.03



SUN VXS.04



VXS Assembly

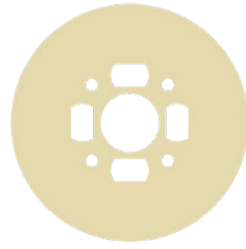
Exploded View



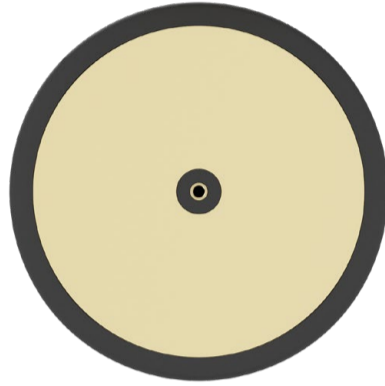


Parts List

Individual Components



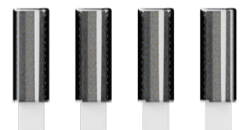
1x **Brass Reflector**



1x **IRIS Reflector**



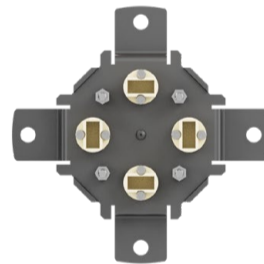
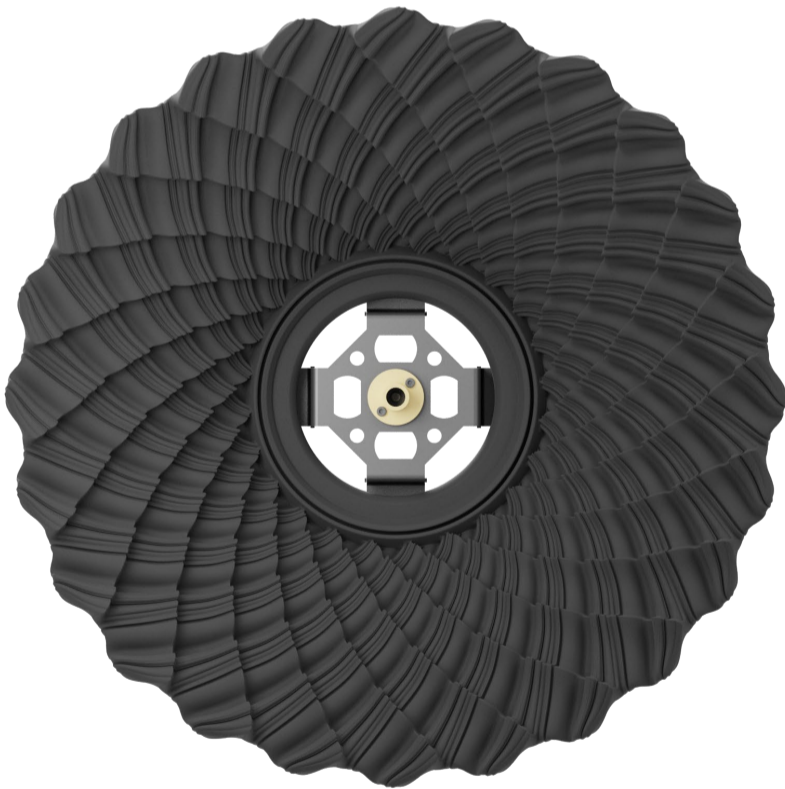
1x **IRIS Pin**



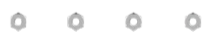
4x **G9 Bulbs**



1x **PETG Colour Filter**



1x **Bracket Fixture**



4x **Bolts**



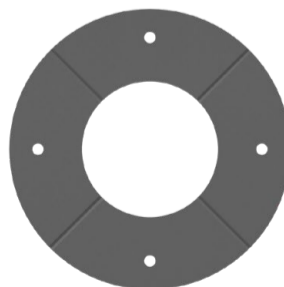
4x **Screws**



4x **Washers**



4x **Wall Plugs**



1x **Hole Stencil**

UNPACKING

Separating Components

Upon receiving your shipment, carefully examine the exterior of the box for any signs of mishandling during transit, such as large dents or punctures. If such damage is evident, it's essential to document it by taking photographs before proceeding further.

Once the package is opened and its contents are unpacked, conduct a thorough inspection of the wall lamp to ensure that no components have been damaged in transit. Should any breakage be discovered, promptly photograph the affected areas and reach out to us at Rollo Studio. This enables us to swiftly facilitate a replacement and initiate any necessary insurance claims.

- *Exercise caution when removing items from the box and unwrapping the plastic packaging.*
- *Ensure all components are removed from the box to avoid overlooking any essential parts.*
- *Place the unpacked components on a soft surface, such as foam, to prevent scratches or damage during assembly.*



02

DISMANTLE

Separating Components

To prepare for installation, it's necessary to dismantle the wall lamp and separate its components. This process ensures a smooth and straightforward installation experience. Follow the steps below to safely disassemble your lamp.

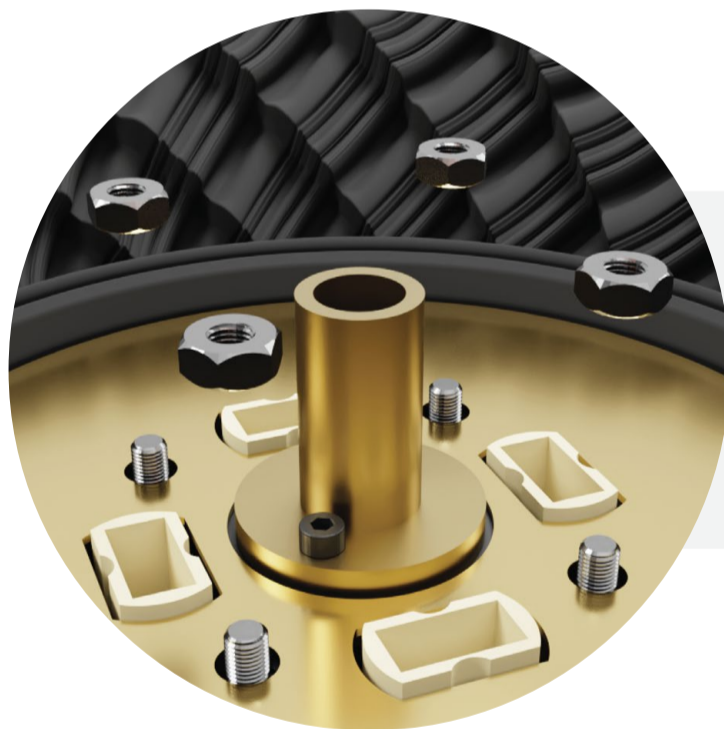


With two hands, remove the PETG colour filter

01.

02.

Carefully remove all four G9 bulbs from their sockets by pulling them out vertically



Unscrew all four nuts and set aside

03.

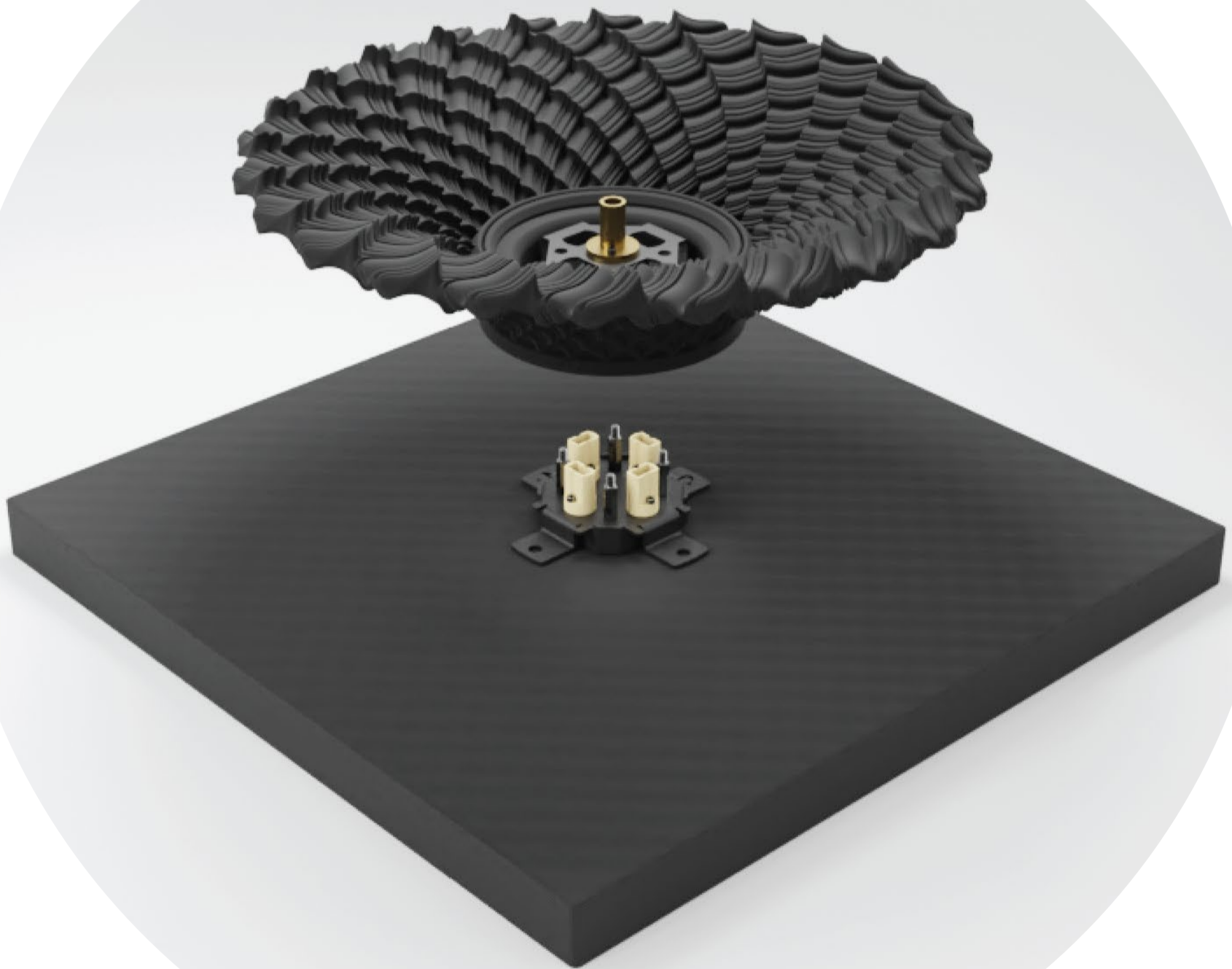
04.

Remove the brass reflector plate



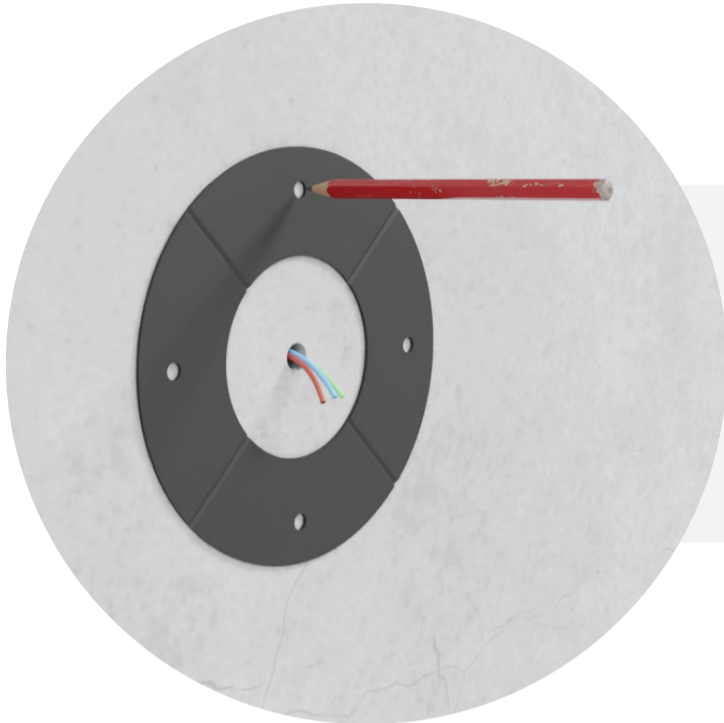
05.

With both hands positioned under the piece, lift it vertically to separate it from the 'Bracket Fixture'. Place the piece aside on a soft surface, such as foam, to prevent damage



MOUNTING

Attaching Bracket Fixture

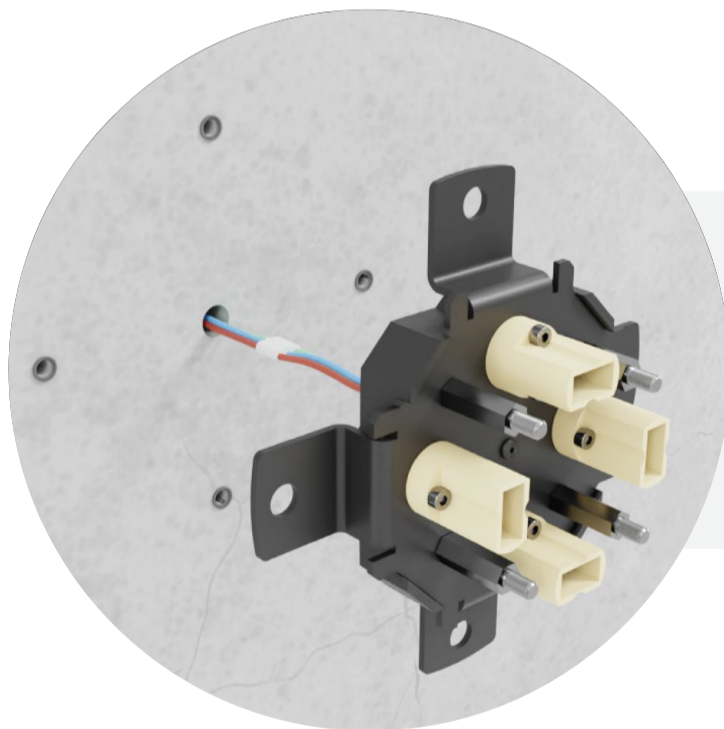
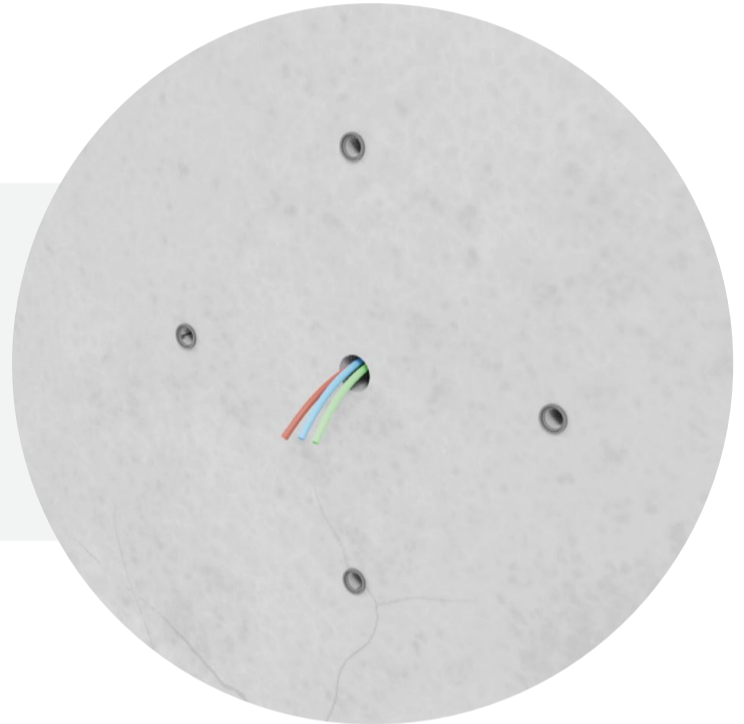


Once you've chosen the mounting location, use the provided 'hole stencil' to accurately mark the drilling points. Ensure that the wires for connection are positioned centrally.

01

02

If utilizing the provided cement plugs, drill four holes measuring 6mm in diameter and 35mm in depth. Insert the plugs securely into each hole.

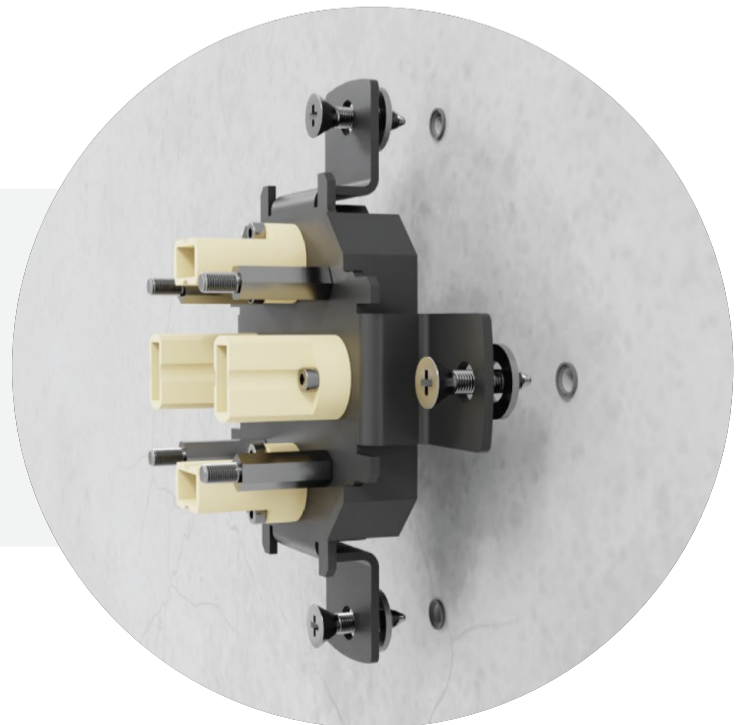


Connect the live wire (brown), neutral wire (blue), and earth wire (green/yellow) to the corresponding terminals on the power supply.

03

04

Screw the 'Bracket Fixture' securely to the wall, ensuring to place washers between the metal plate and the wall surface for added stability.



05

While holding the piece from the inside metal bracket and the back side of the sand shade, align the metal threads on the Bracket Fixture with the holes on the metal bracket, and slide into place.



04

ASSEMBLE

Attach Final Components



Slide the brass reflector into position

01



02

*Screw all four nuts onto the threads by hand.
They do not need to be tightly fastened*

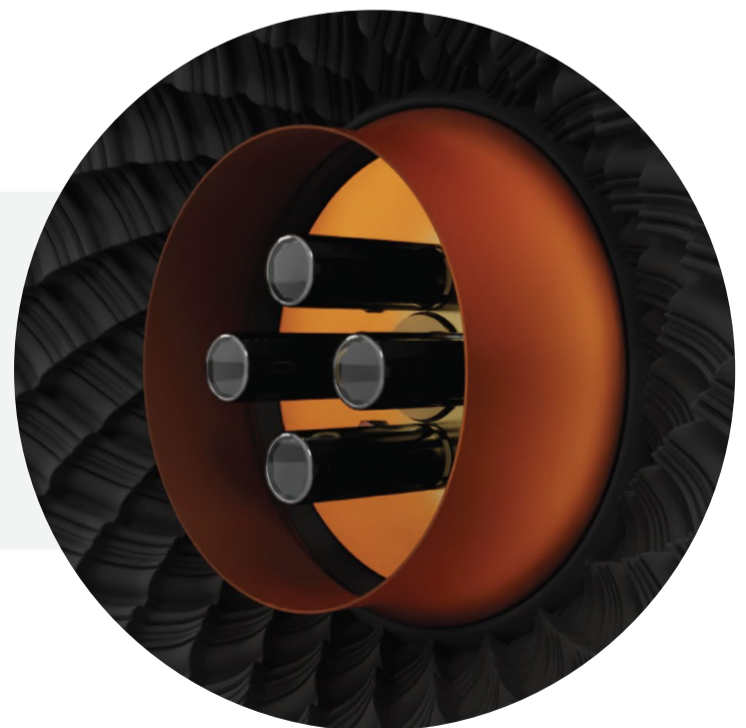


Plug the four bulbs into the fixture sockets

03

04

Slide the Colour Filter into the designated slot





Thread the IRIS Pin into the central insert

05



06

Align the IRIS Pin carefully with the brass bracket on the fixture, then slide it into position.

VOILÀ
Power It Up



ROLLO STUDIO

+31 621485253

info@rollostudio.com

ROLLO STUDIO